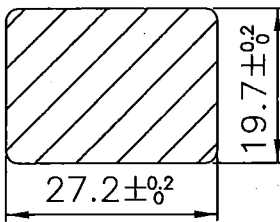
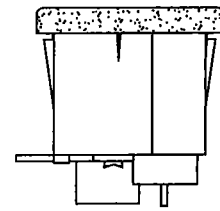
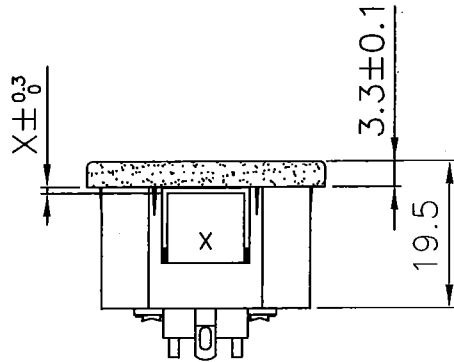
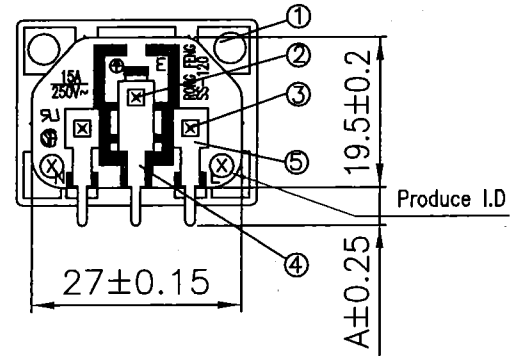
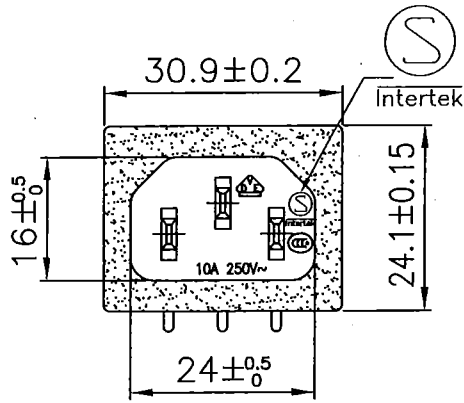


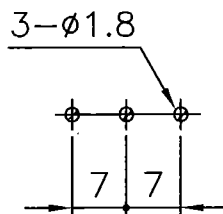
SS-120 INLET

SCALE : 1:1

UNIT : mm



PANEL CUTOUT
THICKNESS X mm



P.C.B. LAYOUT

Rating: 15A 250V AC
 Approvals: UL/CSA
 Rating: 10A 250V AC
 Approvals: VDE/SEMKO/CCC

PART LIST

Part No.	X	Color	"A"
SS-120-PCB-0.8	0.8	Black	5
SS-120-PCB-1.0	1.0	Black	5
SS-120-PCB-1.0C	1.0	Black	10
SS-120-PCB-1.2	1.2	Black	5
SS-120-PCB-1.5	1.5	Black	5
SS-120-PCB-2.0	2.0	Black	5
SS-120-PCB-3.0	3.0	Black	5

5	Soldering PIN Brass Strip t=0.8mm Tin-Plated	2	DIMENSIONAL TOLERANCES		
4	Soldering PIN Brass Strip t=0.8mm Tin-Plated	1	GRADATION	TOLERANCE	
3	Contact PIN Brass Strip t=2mm Ni-Plated	2			
2	Contact PIN Brass Strip t=2mm Ni-Plated	1	X	±0.4	
1	Body Insulator PC Black Color ▲	1	X.X	±0.3	
APPROVED:	CHECK:	DRAWER:	MATERIAL NO: SS-120-PCB-X	X.XX	±0.1
			DRAWING NO: 830819-5	ANGLE	±1°

ENGINEER NO: TWI-K-1043(K)